

# AD Miniweb M830

## Overview

---

**Frequency Band**

UHF 860 - 960 MHz

---

**Chip**

Impinj M830

---

**IC Attachment Technology**

Direct Chip Attach

---

**Antenna Dimensions**

42 x 16 mm / 1.654 x 0.630 in

---

**International Standard**

ISO/IEC 18000-63 Type C

---

**Industry Segments**

Apparel  
Logistics  
Healthcare

---

**Applications**

Brand Protection  
Supply Chain Management  
Home Essentials

---

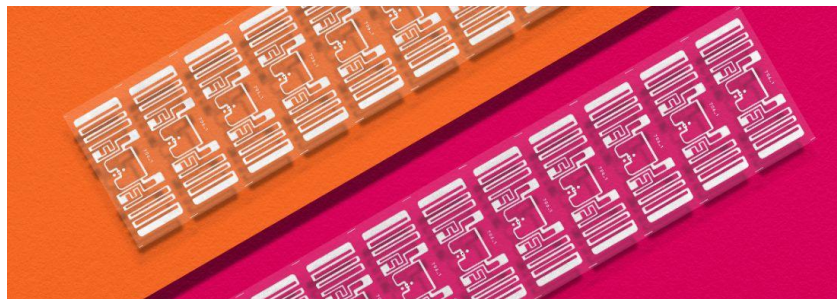
**RoHS**

EU Directive 2011/65/EU and  
2015/863 Compliant

---

**REACH**

Regulation (EC) No. 1907/2006



## Compact size, exceptional performance

AD Miniweb M830 inlays from Avery Dennison Smartrac are designed for general retail, apparel and industrial applications. Offering a compact size and excellent performance, this inlay is ideal for tagging a wide range of materials.

Featuring the impinj M830 IC, AD Miniweb is equipped with 128-bit of EPC memory and 96-bit unique factory locked TID number. A 48-bit unique serial number is factory-encoded into the TID. The improved readability of the new IC offers reliable reading of small tags at high volume and speed which supports the global IoT deployments.

AD Miniweb carries a 42 x 16mm (1.654x.0630in) antenna footprint and is offered in dry inlay, wet inlay and pressure sensitive label delivery formats.

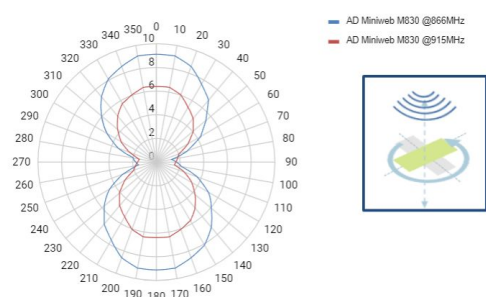
Like all RFID products from Avery Dennison, AD Miniweb M830 inlays are compliant with ISO 9001:2015 Quality Management and ISO 14001:2015 Environmental Management, which ensure a reliable and state-of-the-art product that meets a variety of application needs, especially in the retail environment. The RFID Lab at Auburn University has awarded Avery Dennison its first comprehensive and significant ARC accreditation for quality.

## Technical features

<b>Chip / IC Attachment Technology</b>	Impinj M830 / Direct Chip Attach		
<b>EPC and User Memory</b>	128-bit EPC		
<b>TID Memory</b>	96-bit / 48-bit unique serial number		
<b>Product Code</b>	IL-610313	IL-610315	IL-610316
<b>Delivery Format</b>	Dry inlay	Wet inlay	Label
<b>Die-Cut Dimension</b>	-	45 x 18 mm / 1.772 x 0.709 in	45 x 18 mm / 1.772 x 0.709 in
<b>Inlay Substrate</b>	PET	PET	PET
<b>Face Sheet</b>	-	-	Mid-gloss paper
<b>Standard Pitch</b>	20 mm / 0.787 in	20 mm / 0.787 in	20 mm / 0.787 in
<b>Web Width</b>	48 mm / 1.890 in	48 mm / 1.890 in	48 mm / 1.890 in
<b>Core Size</b>	76 mm / 3 in	76 mm / 3 in	76 mm / 3 in
<b>Quantity / Reel</b>	10,000 pcs/reel 20,000 pcs/box	20,000 pcs/reel 40,000 pcs/box	5,000 pcs/reel 10,000 pcs/box
<b>Operating Temperature</b>	-40 °C to 85 °C / -40 °F to 185 °F		
<b>On-Metal</b>	Non metal		
<b>Certificate</b>	<a href="#">ARC Specification Guide</a>		

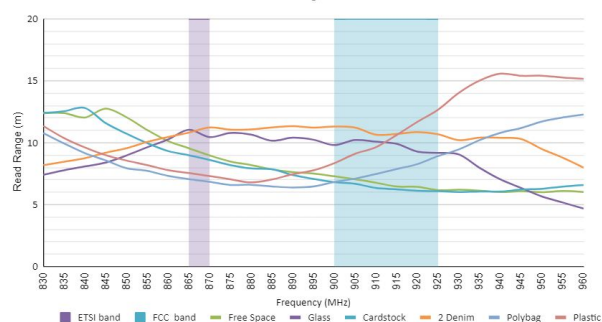
## Orientation Sensitivity

Read Distance on Free Space



## Read Range

Read Range



All graphs are indicative: performance in real life applications may vary.