

AD TracX M781

Overview

Frequency Band

UHF 860 - 960 MHz

Chip Attachment Technology

Direct Chip Attach

Chip

Impinj M781

Antenna Dimensions

50 x 50 mm / 1.97 x 1.97 in

International Standard

ISO 18000-63, EPC Class 1 Gen 2

Industry SegmentsLogistics
Automotive**Applications**Asset Tracking
Package Tracking
Postal**RoHS**EU Directive 2011/65/EC and
Directive (EU) 2015/863**REACH**

Regulation (EC) No. 1907/2006



Cutting-edge product for supply chain applications

AD TracX M781 is a new UHF product with an innovative design optimized for logistics and supply chain management applications.

Taking advantage of a unique antenna design, AD TracX M781 offers a small and cost-efficient form factor providing full orientation sensitivity. In addition, the product has an excellent global read range on light dielectric materials, providing consistent performance even on challenging materials.

AD TracX inlays is equipped with the M781 IC from Impinj. The IC comes with 128-bit EPC memory and 512-bit User memory, and offers an enhanced "autotune" adaptive RF tuning feature which helps boosting the performance. In addition, M781 has a privacy mode that enables loss prevention and protects consumer privacy.

AD TracX M781 tags and inlays are produced using leading-edge inlay assembly technologies. Monitoring every step in the production process, from the antenna to the final assembly of the inlay, guarantees optimal quality products.

Our inlays and tags are compliant with ISO 9001:2015 Quality Management and ISO 14001:2015 Environmental Management, which ensure a reliable and state-of-the-art product that meets a variety of application needs, especially in the retail environment.

Technical features

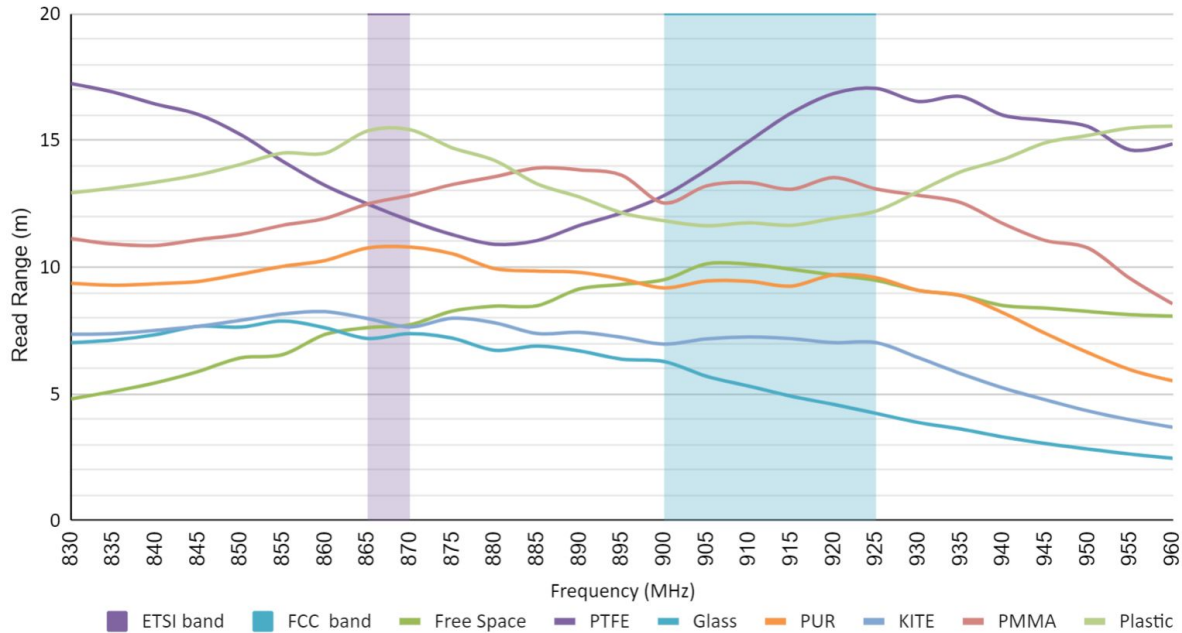
Chip	Impinj M781
Chip Attachment Technology	Direct Chip Attach (DCA)
EPC and User Memory	128-bit and 512-bit
TID Memory	96-bit / 48-bit unique serial number
Product Code*	3009022 / IL-604762
Delivery Format	Wet inlay +
Die-Cut Dimension	53 x 53 mm / 2.1 x 2.1 in
Inlay Substrate	PET
Face Sheet	Clear PET
Standard Pitch	60 mm / 2.36 in
Web Width	60 mm / 2.36 in
Core Size	76 mm / 3 in
Quantity / Reel	5,000 pcs/reel 5,000 pcs/box
Operating Temperature	-40°C to 85°C / -40°F to 185°F

*Other product codes available upon request.

Performance Graphs

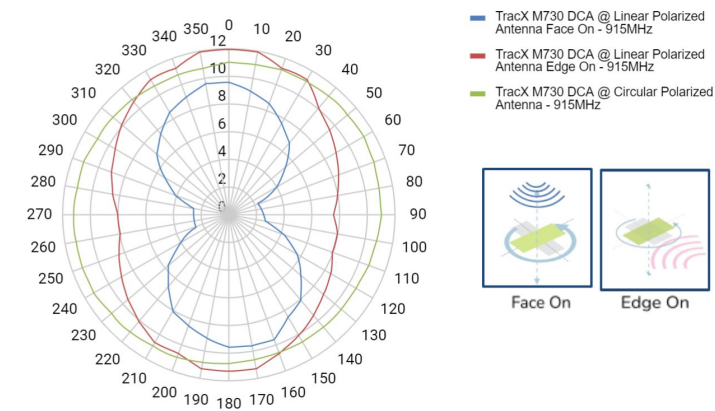
All Performance graphs remain the same using M781 IC.

Read range



Orientation sensitivity

Linear polarized reader antenna vs Circular polarized



Orientation sensitivity

FCC vs ETSI using linear polarized reader antenna

